



GMT MONTHLY MEMBERSHIP PROGRESS REPORT

Results as of: 7/31/2019

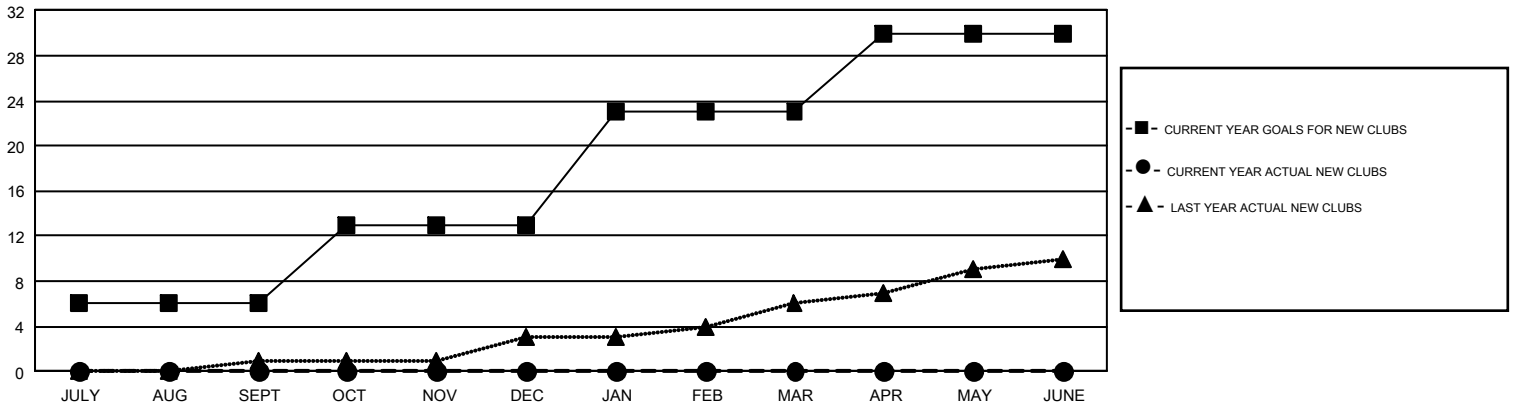
GMT Constitutional Area 1, Group M

GMT: OPEN

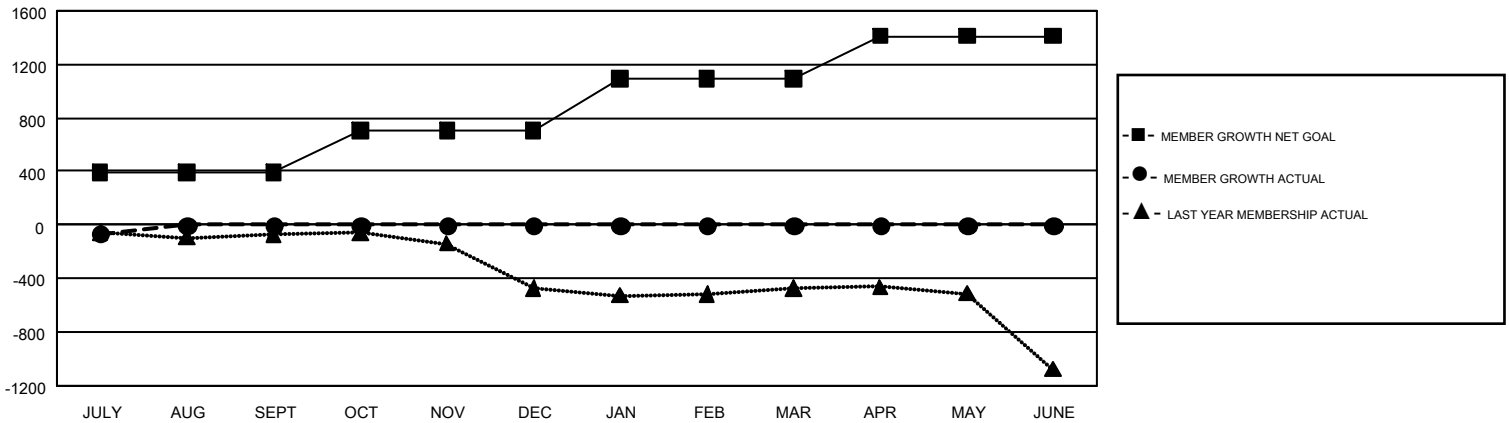
REPORT DOES NOT INCLUDE CLUBS IN UNDISTRICTED AREAS.

Clubs				Members			
RESULTS FOR 2019-2020				RESULTS FOR 2019-2020			
QUARTER	NEW CLUB GOAL	NEW CLUBS	DROPPED CLUBS	QUARTER	MEMBER GROWTH NET GOAL	MEMBER GROWTH ACTUAL	DROPPED MEMBERS ACTUAL (including transfers)
JULY/AUG/SEPT	6	0	1	JULY/AUG/SEPT	390	205	220
OCT/NOV/DEC	7	0	0	OCT/NOV/DEC	314	0	0
JAN/FEB/MAR	10	0	0	JAN/FEB/MAR	388	0	0
APR/MAY/JUNE	7	0	0	APR/MAY/JUNE	318	0	0

GOALS AND ACTUAL NEW CLUBS CUMULATIVE



GOALS AND ACTUAL MEMBERS CUMULATIVE



DROPPED CLUBS: 1	88 CLUBS OF 841 ADDED 1 OR MORE NEW MEMBERS	GENDER DISTRIBUTION MALE 12,155 (64.49%) FEMALE 6,693 (35.51%)
DROPPED MEMBERS DECEASED 23 CLUB CANCELLED 0 OTHER 197 <hr/> TOTAL 220	CLICK HERE FOR CUMULATIVE MEMBERSHIP DATA	TOTAL FAMILY UNIT MEMBERS 4,010 FAMILY MEMBERS PAYING HALF DUES 2,057